



Working Instruction, Mechanical

Applicable for W302

CONTENTS

1	Introduction	3
1.1	Equipment	5
1.2	General cautions	6
1.3	Adhesives	6
2	Disassembly	7
2.1	Overview	7
2.1.1	Battery Cover Assy & Battery	8
2.1.2	Screw Cap	9
2.1.3	Screw	9
2.1.4	Front Assy	10
2.1.5	Keypad	11
2.1.6	Rear Cover Assy	12
2.1.7	Antenna Assy	13
2.1.8	LCD Metal Support	14
2.1.9	Camera Flex Assy/Camera Support Assy	15
2.1.10	LCD Assy	16
2.1.11	PBA	17
3	Replacements	18
3.1	Battery Cover Assy	19
3.2	Screw Cap	19
3.3	Screws	19
3.4	Front Assy	19
3.5	Keypad	19
3.6	Rear Cover Assy	19
3.7	Antenna Assy	19
3.8	LCD Metal Support	20
3.9	LCD Assy	20
3.10	Metal Frame Assy	20
3.11	Liquid intrusion label	20
3.12	Mic gasket	21
3.13	Co-brand Label	22
3.14	Side Key Volume	23
3.15	Side Key Photo	24
3.16	Walkman Key	25
3.17	SIM M2 PBA Assy	26
3.18	Camera Rubber	27



3.19	Camera Window Assy	28
3.20	LCD Window Assy	29
3.21	Speaker	30
3.22	Receiver	31
3.23	Vibrator	32
3.24	Camera Flex Assy	33
3.25	LCD Window Sponge	34
3.26	Label	35
4	Reassembly	36
4.1	Overview	36
4.1.1	PBA	37
4.1.2	LCD Assy	38
4.1.3	Camera Flex Assy/Camera Support Assy	39
4.1.4	LCD Metal Support	40
4.1.5	Antenna Assy	41
4.1.6	Rear Cover Assy	42
4.1.7	Keypad	43
4.1.8	Front Assy	44
4.1.9	Screws	45
4.1.10	Screwcaps	45
4.1.11	Battery & Battery Cover Assy	46
5	Country of Origin Barcodes for Brazil/VIVO	47
6	Revision history	47

1 Introduction

W302





1.1 Equipment

SPECIAL TOOLS

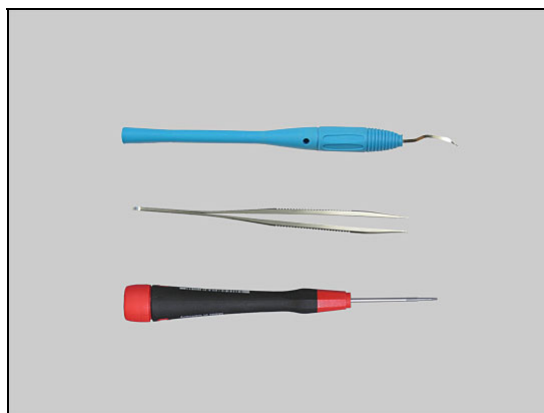
- NTZ112459 Torque Screwdriver (or equivalent)
- NTZ112288 Bits (Torx No. 6)
- NTZ112302/2 Front Opening Tool
- NTZ112590 Guitar Pick #Plectrum#



STANDARD TOOLS

Standard tools text:

- Dentist Hook
- Tweezers
- Screwdriver



ESD EQUIPMENT

Protect the phone from ESD damages whenever it has been opened by using:

- ESD-wristband
- ESD-gloves



LABEL EQUIPMENT

The following special equipment is required when replacing or installing a new label:

- Hot air flow solder station
- Zebra printer connected to computer





1.2 General cautions

The following cautions are considered to be generic for all phone models and will not be repeated in the Disassembly, Replacements and Reassembly sections:

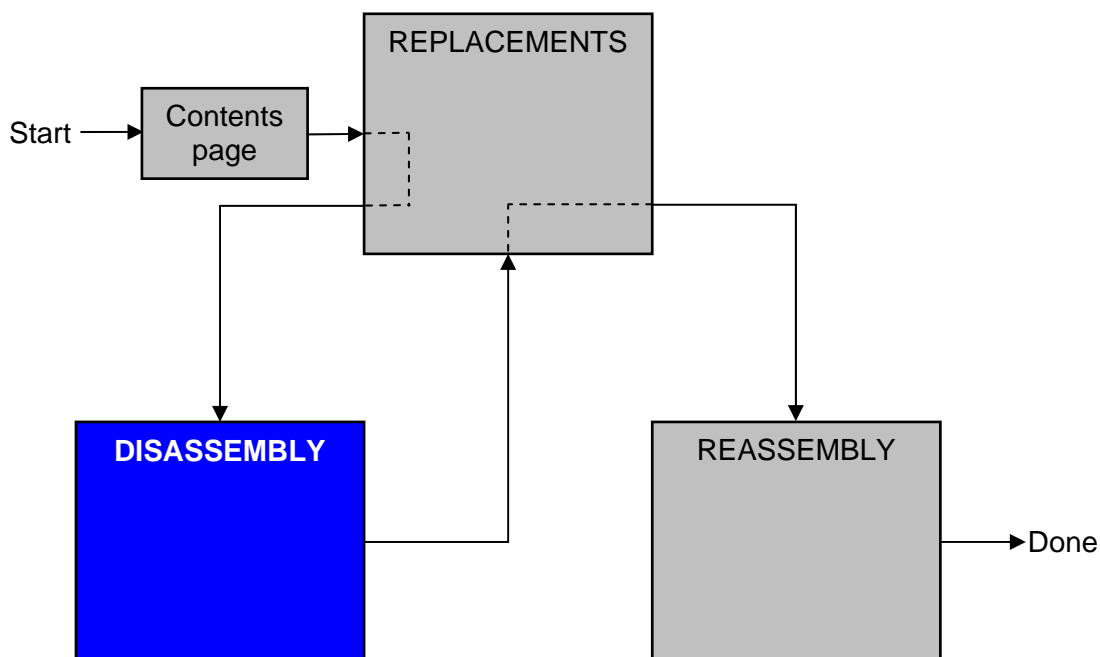
- ***SWITCH OFF THE PHONE AND REMOVE ANY MEMORY STICK BEFORE THE START OF THE DISASSEMBLY!***
- ***KEEP ALL CONTACT SURFACES CLEAN!***
- ***BE CAREFUL WHEN USING TOOLS LIKE THE DENTIST HOOK, TWEEZERS, OPENING TOOLS, GUITAR PICK ETC. TO AVOID SCRATCHES OR DAMAGES TO THE EXTERIOR AND INTERIOR PARTS OF THE PHONE!***
- ***BE CAREFUL NOT TO DAMAGE ANY CONTACT SPRINGS!***
- ***REMEMBER TO REMOVE THE PROTECTION FOILS ON NEW PARTS SUCH AS THE FRONT COVER AND LCD!***
- ***NEVER TOUCH THE DISPLAY GLASS!***
- ***USE AIR BLOW EQUIPMENT TO KEEP THE FRONT WINDOW AND DISPLAY MODULE DUST FREE!***

1.3 Adhesives

Use a dentist hook and/or the tweezers to remove old adhesives.
Clean the surface with isopropyl alcohol before attaching new adhesives.

2 Disassembly

When you are going to replace a part being listed in *Replacements*, the instruction of that section usually begins by directing you to this *Disassembly* section with a specification of the instructions you have to carry out in order to disassemble the phone as far as needed before returning to *Replacements* for the actual replacement.



2.1 Overview

The disassembly is done in the following sequence:

1. Battery Cover Assy
2. Battery
3. Screw Cap
4. Front Assy
5. Keypad
6. Rear Cover Assy/SIM M2 PBA Assy
7. Antenna Assy
8. LCD Metal Support
9. Camera Flex Assy/Camera Support Assy
10. LCD Assy
11. PBA
12. Metal Frame Assy



2.1.1 Battery Cover Assy & Battery

Use your finger to open the *Battery cover Assy*



Remove the *Battery Cover Assy*.

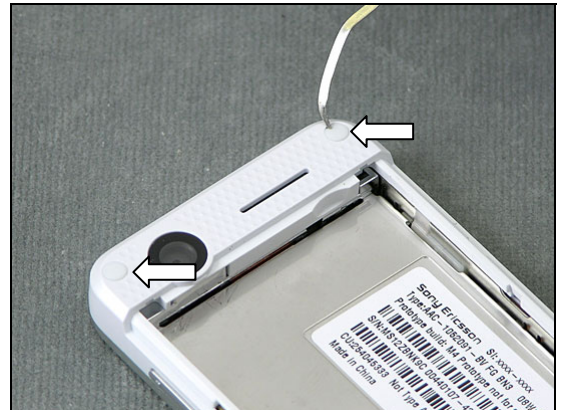


Use you finger to remove the *battery*.



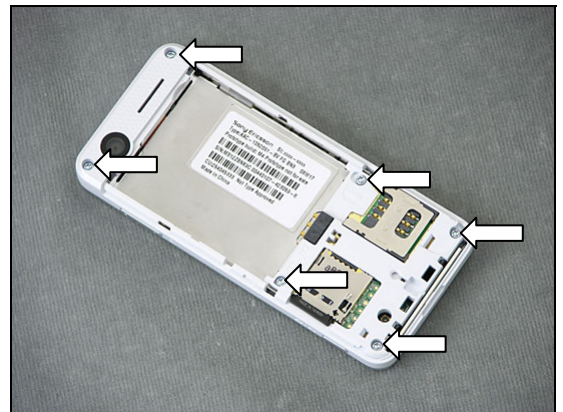
2.1.2 Screw Cap

Use a Dentist Hook to remove the two *Screw Caps*.



2.1.3 Screw

Use a Torx No. 6 (T6) Bit to remove the *Screws*.



2.1.4 Front Assy

Use a Guitar Pick to slide and loosen the *Front Assy*.



Remove the *Front Assy*.



2.1.5 Keypad

Remove the *Keypad*



2.1.6 Rear Cover Assy

Use a Front Opening Tool to release the snap hooks on the *Rear Cover Assy*



Use a Front Opening Tool to release the snap hooks on the side of the *Rear Cover Assy*



Repeat on the opposite side.

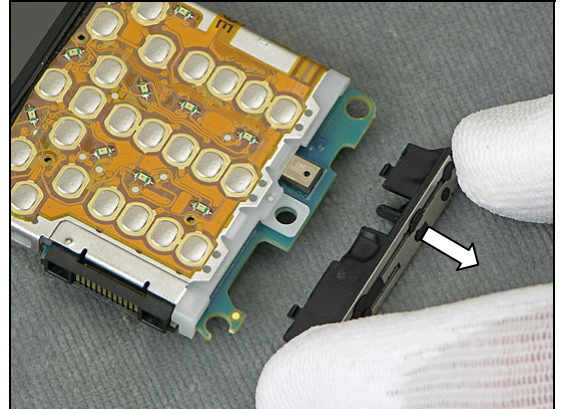


Lift up to release the core unit from the *Rear Cover Assy*



2.1.7 Antenna Assy

Use your fingers to remove the *Antenna Assy*.



2.1.8 LCD Metal Support

Use a Front Opening Tool to release the *LCD Metal Support*.

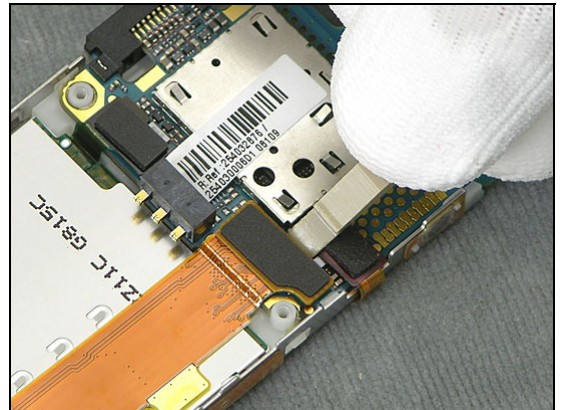


Use your fingers to lift up and pull back the *LCD Metal Support*.



2.1.9 Camera Flex Assy/Camera Support Assy

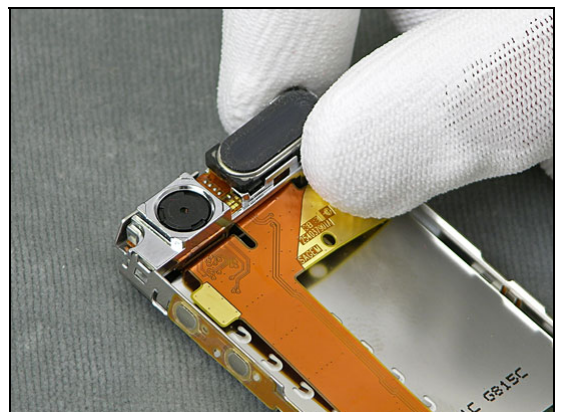
Use a Front Opening Tool to disconnect the *Camera Flex Assy Connector* from the PBA.



Use a small screw driver to carefully release the snap hook on the frame.

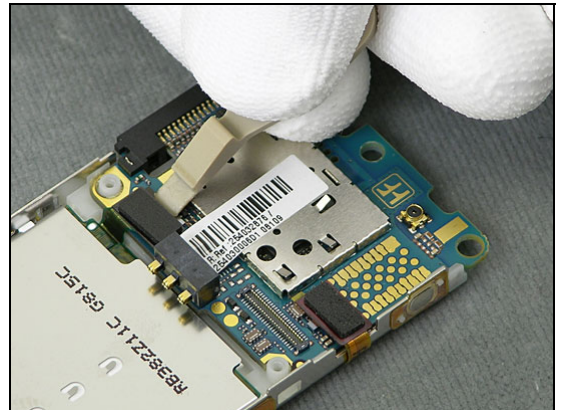


Use your fingers to remove the *Camera Flex Assy/Camera Support Assy*.

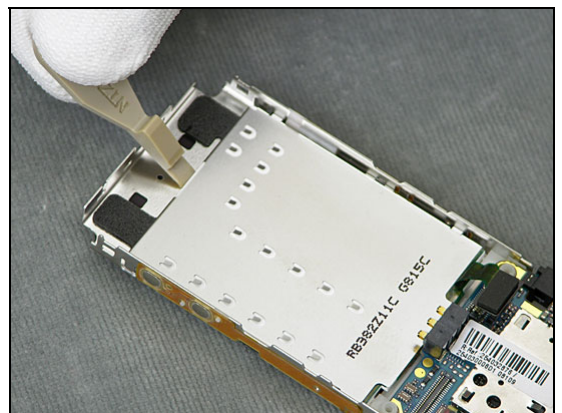


2.1.10 LCD Assy

Use a Front Opening Tool to disconnect the *LCD Assy Connector*.



Use a Front Opening Tool to release the *LCD Assy*.



BE CAREFUL NOT TO TOUCH THE DISPLAY
Remove the *LCD Assy*.

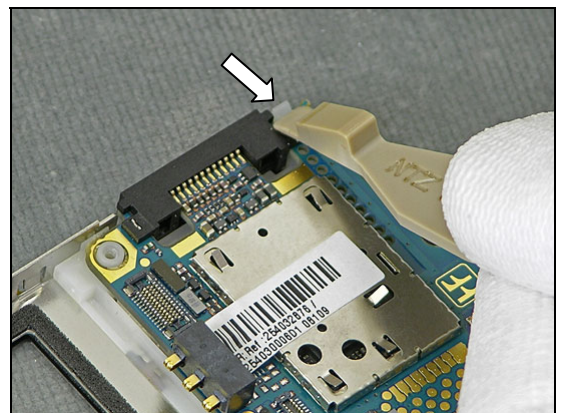


2.1.11 PBA

Use a Front Opening Tool to disconnect the Dome Foil Connector.



Use a Front Opening Tool to release the hook.



Use your fingers to remove the PBA.



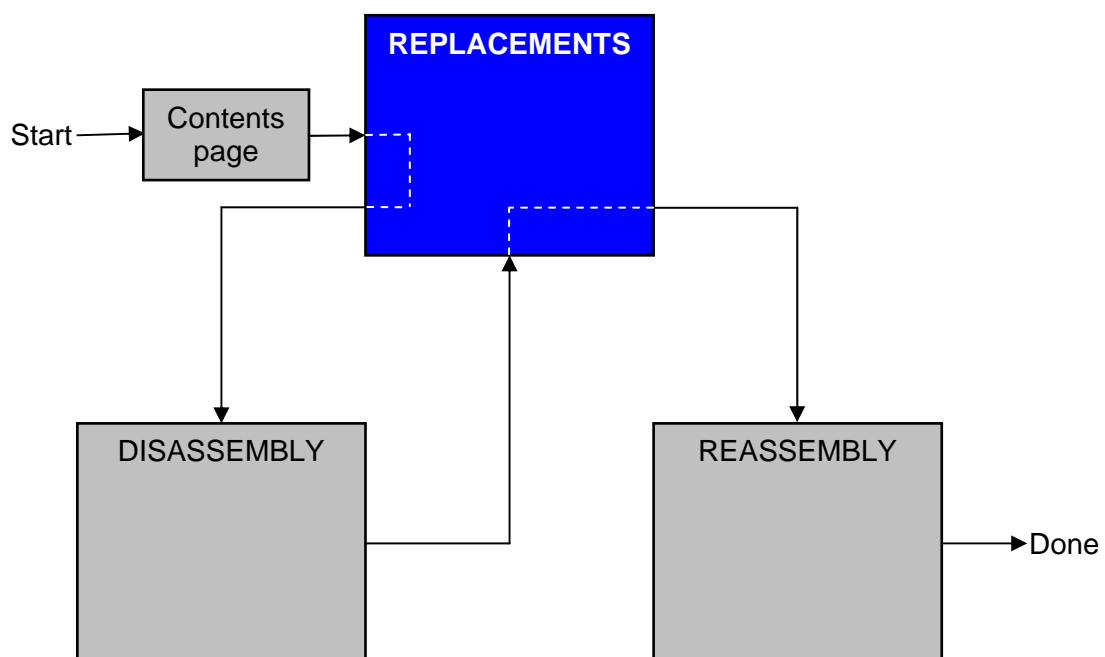
3 Replacements

Search for the part to be replaced on the Contents page and go to that instruction to be found in this *Replacements* section.

The instruction usually begins by directing you to the *Disassembly* section with a specification of the instructions you have to carry out in order to disassemble the phone as far as needed before the actual replacement.

Go back to this *Replacements* section and carry out the instruction.

The instruction usually ends by directing you to the *Reassembly* section with a specification of the instructions you have to carry out in order to reassemble the phone.





3.1 Battery Cover Assy

Follow the 2.1.1 Disassembly instructions!

Replace the Battery Cover Assy

Follow the 4.1.11 Reassembly instructions!

3.2 Screw Cap

Follow the 2.1.2 Disassembly instructions!

Replace the Screw Cap

Follow the 4.1.10 Reassembly instructions!

3.3 Screws

Follow the 2.1.1- 2.1.3 Disassembly instructions!

Replace the Screws

Follow the 4.1.9- 4.1.11 Reassembly instructions!

3.4 Front Assy

Follow the 2.1.1- 2.1.4 Disassembly instructions!

Replace the Front Assy

Follow the 4.1.8- 4.1.11 Reassembly instructions!

3.5 Keypad

Follow the 2.1.1- 2.1.5 Disassembly instructions!

Replace the Keypad

Follow the 4.1.7- 4.1.11 Reassembly instructions!

3.6 Rear Cover Assy

Follow the 2.1.1- 2.1.6 Disassembly instructions!

Replace the Keypad

Follow the 4.1.6- 4.1.11 Reassembly instructions!

3.7 Antenna Assy

Follow the 2.1.1- 2.1.7 Disassembly instructions!

Replace the Antenna Assy

Follow the 4.1.5- 4.1.11 Reassembly instructions!

3.8 LCD Metal Support

Follow the 2.1.1- 2.1.8 Disassembly instructions!

Replace the LCD Metal Support

Follow the 4.1.4- 4.1.11 Reassembly instructions!

3.9 LCD Assy

Follow the 2.1.1- 2.1.10 Disassembly instructions!

Replace the LCD Assy

Follow the 4.1.2- 4.1.11 Reassembly instructions!

3.10 Metal Frame Assy

Follow the 2.1.1- 2.1.11 Disassembly instructions!

Replace the Metal Frame Assy

Follow the 4.1.1- 4.1.11 Reassembly instructions!

3.11 Liquid intrusion label

Follow the 2.1.1- 2.1.11 Disassembly instructions!

Replace the Liquid intrusion label

Follow the 4.1.1- 4.1.11 Reassembly instructions!



3.12 Mic gasket

Removal

Follow the 2.1.1 – 2.1.4 Disassembly instructions!

Use a dentist hook to loosen the Mic gasket.



Use a pair of Tweezers to remove the Mic gasket.



Installation

Use a pair of Tweezers to mount the Mic gasket.

Follow the 4.1.8 – 4.1.11 Reassembly instructions!



3.13 Co-brand Label

Removal

No Disassembly needed!

CAREFUL NOT TO DAMAGE THE MIC GASKET

Use a Dentist hook to loosen the Co-brand Label.



Use a blunt pair of tweezers removal tool to remove the Co-brand Label.



Installation

Use a blunt pair of tweezers to mount the Co-brand Label.

No Reassembly needed!



3.14 Side Key Volume

Removal

Follow the 2.1.1 – 2.1.6 Disassembly instructions!

Use a pair of Tweezers to remove the Side Key Volume.



Installation

Use a pair of Tweezers to place the Side Key Volume.

Follow the 4.1.6 – 4.1.11 Reassembly instructions



3.15 Side Key Photo

Removal

Follow the 2.1.1 – 2.1.6 Disassembly instructions!

Use a pair of Tweezers to remove the Side Key Photo.

Installation

Use a pair of Tweezers to place the Side Key Photo.

Follow the 4.1.6 – 4.1.11 Reassembly instructions



3.16 Walkman Key

Removal

Follow the 2.1.1 – 2.1.6 Disassembly instructions!

Use a pair of Tweezers to remove the Walkman Key.



Installation

Use a pair of Tweezers to place the Walkman Key.

Follow the 4.1.6 – 4.1.11 Reassembly instructions



3.17 SIM M2 PBA Assy

Removal

Follow the 2.1.1 – 2.1.6 Disassembly instructions!

Use a Front Removal Tool to release the two snap hooks holding the SIM M2 PBA Assy.

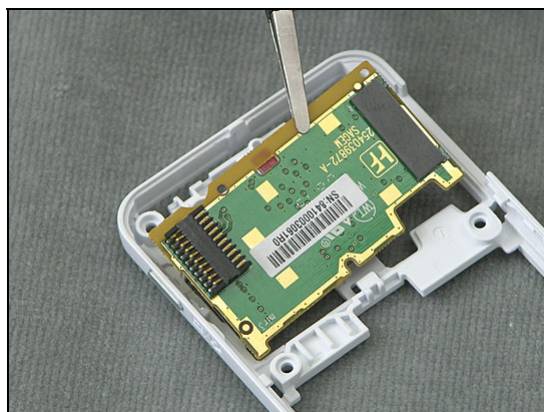
Continue with the second snap hook

Use a blunt pair of tweezers to remove the SIM M2 PBA Assy.

Installation

Use your fingers to snap on the SIM M2 PBA Assy.

Follow the 4.1.6 – 4.1.11 Reassembly instructions



3.18 Camera Rubber

Removal

Follow the 2.1.1 – 2.1.6 Disassembly instructions!

Use a blunt pair of tweezers to loosen and remove the Camera Rubber.



Installation

Use a blunt pair of tweezers to place the Camera Rubber.

Follow the 4.1.6 – 4.1.11 Reassembly instructions!



3.19 Camera Window Assy

Removal

Follow the 2.1.1 – 2.1.6 Disassembly instructions!

Use a blunt pair of tweezers to press out and remove the Camera Window Assy.



Installation

Use a blunt pair of tweezers to place the Camera Window Assy.

Follow the 4.1.6 – 4.1.11 Reassembly instructions!



3.20 LCD Window Assy

Removal

Follow the 2.1.1 – 2.1.5 Disassembly instructions!

Use a blunt pair of tweezers to remove the LCD Window Assy.



Installation

Use your fingers to place the LCD Window Assy from the back side of the Front Assy.

Follow the 4.1.7 – 4.1.11 Reassembly instructions!



3.21 Speaker

Removal

Follow the 2.1.1 – 2.1.6 Disassembly instructions!

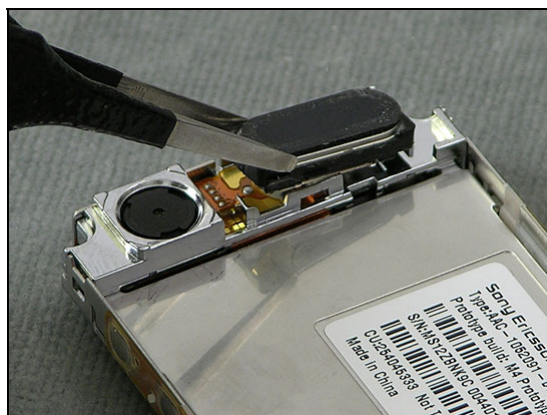
Use a Front opening Tool to release the snap hook holding the Speaker.



Installation

BE CAREFUL NOT TO DAMAGE THE SPRING CONNECTORS OF THE SPEAKER

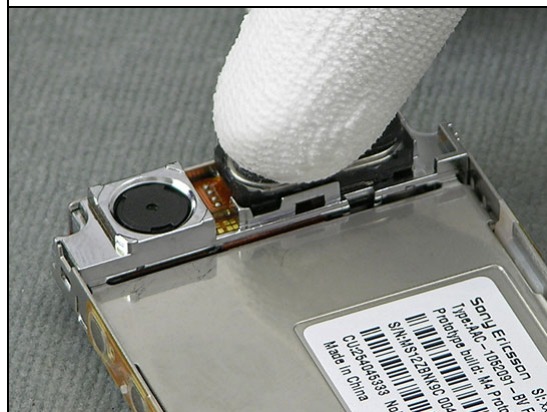
Use a blunt pair of Tweezers to mount the Speaker.



Use your fingers to mount the Speaker.

Check that the snap hooks are locked

Follow the 4.1.6 – 4.1.11 Reassembly instructions!

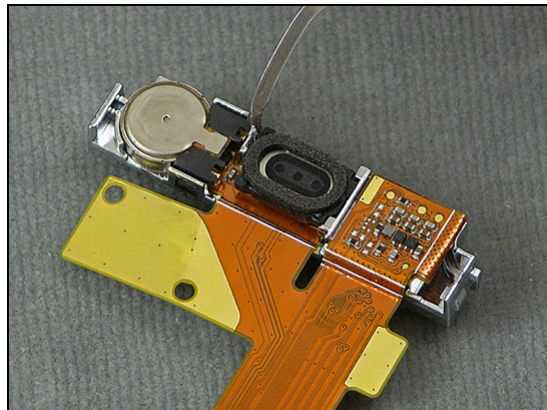


3.22 Receiver

Removal

Follow the 2.1.1 – 2.1.9 Disassembly instructions!

Use a dentist hook to release the snap hook and a pair of tweezers to remove the Receiver.

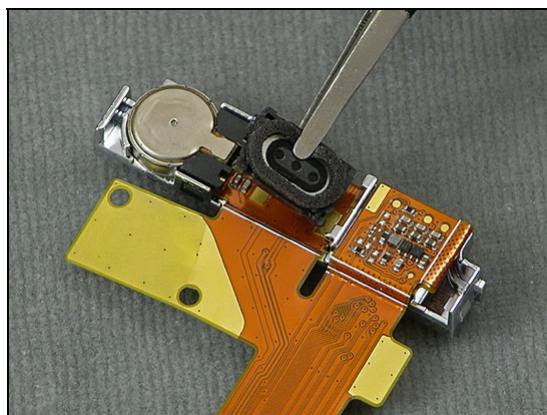


Installation

BE CAREFUL NOT TO DAMAGE THE SPRING CONNECTORS OF THE RECEIVER

Use a blunt pair of Tweezers to position the Receiver and your finger to push it into place.

Follow the 4.1.3 – 4.1.11 Reassembly instructions!

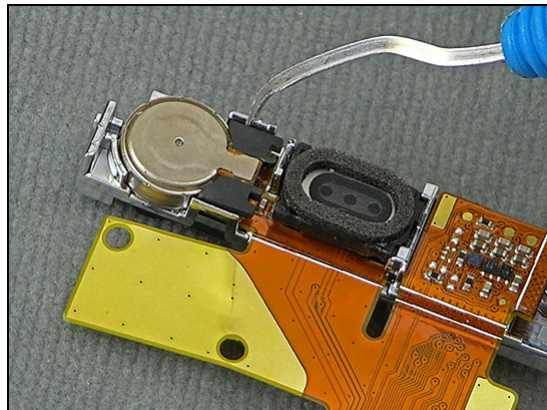


3.23 Vibrator

Removal

Follow the 2.1.1 – 2.1.9 Disassembly instructions!

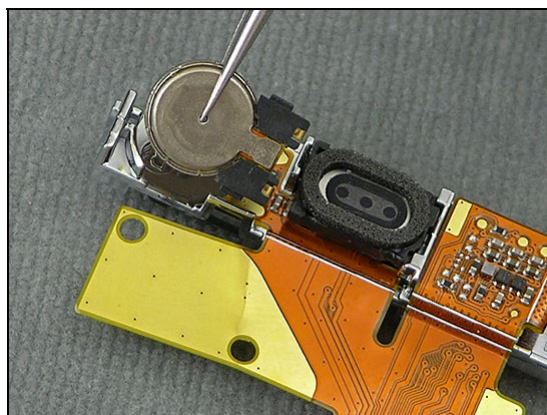
Use a dentist hook to release the snap hook and pair of tweezers to remove the Vibrator



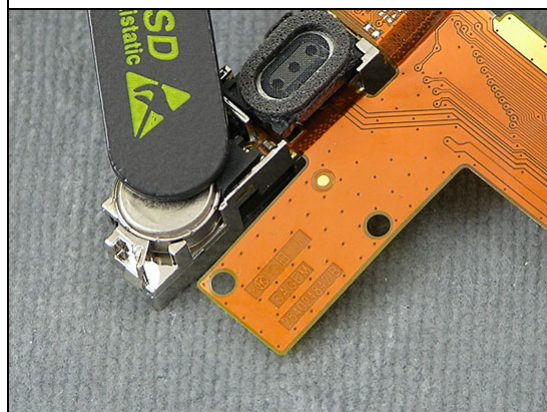
Installation

BE CAREFUL NOT TO DAMAGE THE SPRING CONNECTORS OF THE VIBRATOR

Use a pair of Tweezers to mount the Vibrator.



Use the rear end of a pair of Tweezers to push down the Vibrator.



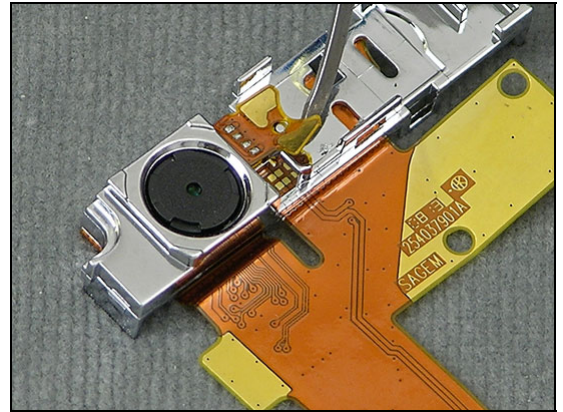
Follow the 4.1.3 – 4.1.11 Reassembly instructions

3.24 Camera Flex Assy

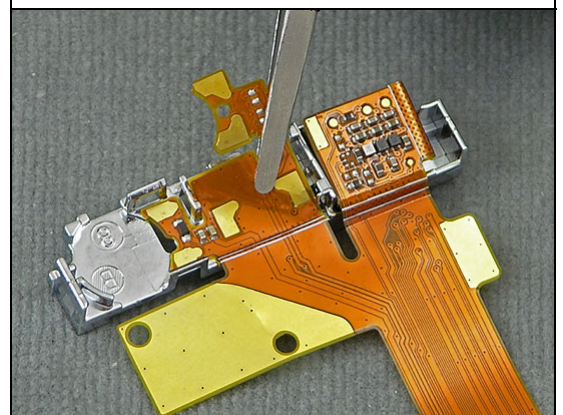
Removal

Follow the 2.1.1 – 2.1.9 Disassembly instructions!

Use a Dentist Hook to lift up the end of the Camera Flex Assy, as shown in pictures



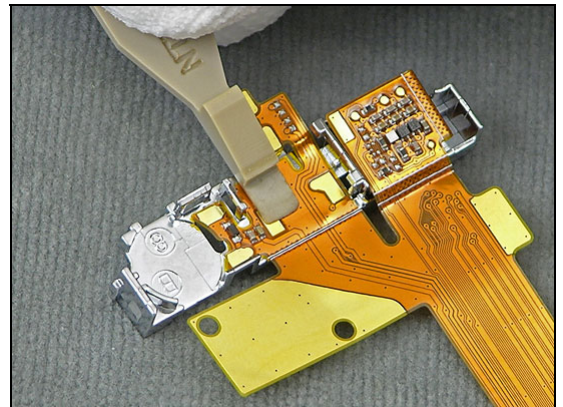
Continue on the other side, use a blunt pair of tweezers to remove the Camera Flex assy



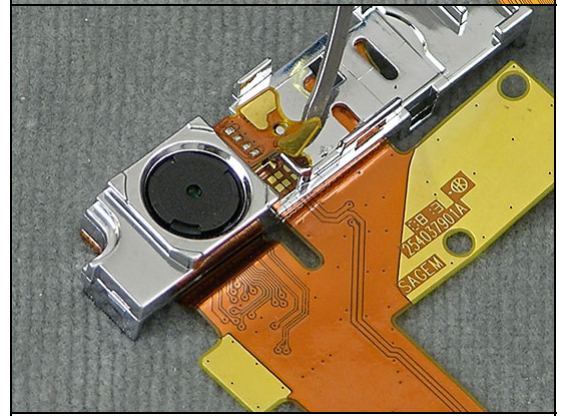
Installation

CAREFUL NOT TO DAMAGE THE NEARBY COMPONENTS

Start to mount the new Camera Flex assy according to picture, press with a Front opening tool



Continue on the other side as shown in picture



Follow the 4.1.3 – 4.1.11 Reassembly instructions!

3.25 LCD Window Sponge

Removal

Follow the 2.1.1 – 2.1.11 Disassembly instructions!

Use a pair of blunt Tweezers to remove the LCD Window Sponge.



Installation

Peel of and fold the protection tape as shown in picture.
Use your fingers to carefully align the LCD Window Sponge.
Remove the remaining part of the protection tape and check that the position is correct

Follow the 4.1.1 – 4.1.11 Reassembly instructions!



3.26 Label

Follow the 2.1.1 Disassembly instructions!

Read the old label and/or write the information into the "Label make" program before removal

Note the position of the label before removal

Heat up the label by using hot air, if needed.

Carefully remove the label without causing scratches

If there still are residues, clean the surface with isopropyl alcohol

Check that the proper label format is loaded in the Zebra printer.

Write a new label by using the program "Label make" and check that the printing is OK.

Take the new label and place it onto the frame as in the adjacent picture.

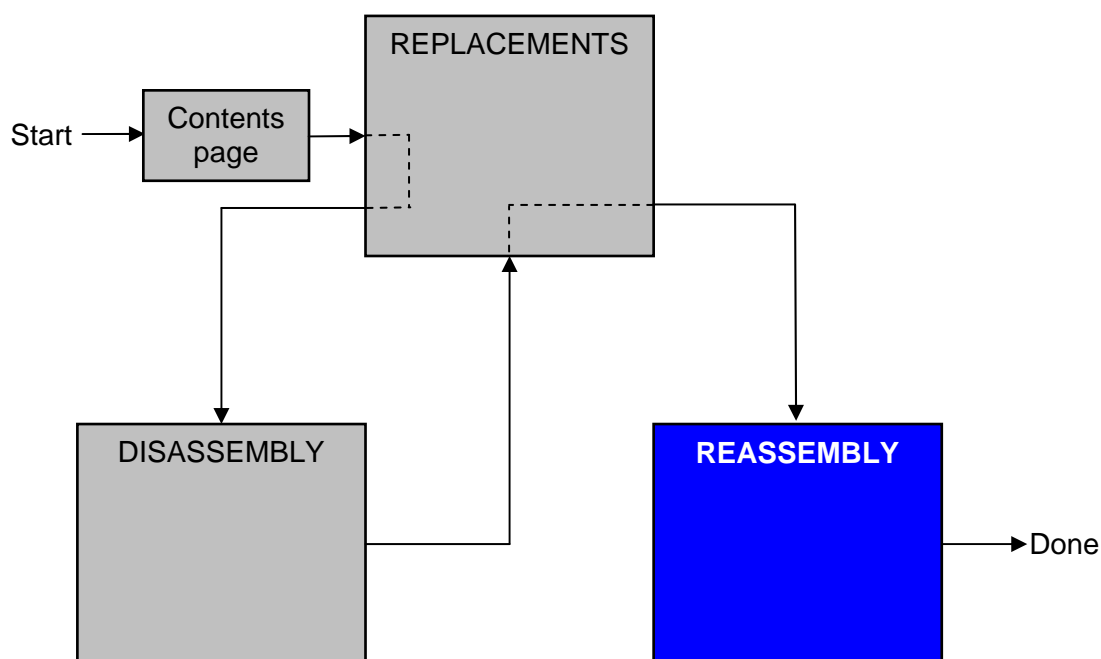
ONE LABEL ONLY IS ALLOWED!

Follow the 4.1.11 Reassembly instructions!



4 Reassembly

After replacing a part being listed in Replacements, the instruction of that section usually ends by directing you to this Reassembly section with a specification of the instructions you have to carry out in order to reassemble the phone.



4.1 Overview

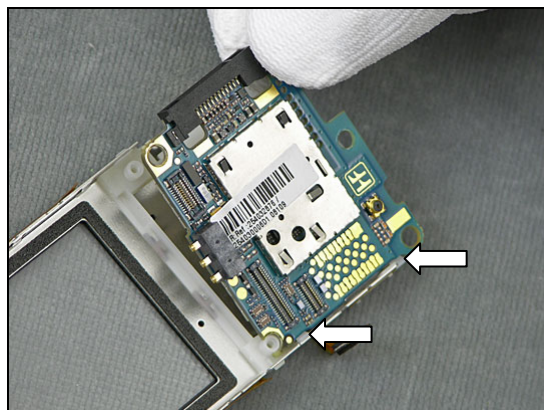
The reassembly is done in the following sequence:

1. Metal Frame Assy
2. PBA
3. LCD Assy
4. Camera Flex Assy/Camera support Assy
5. Metal LCD Support
6. Antenna Assy
7. Rear Cover Assy/SIM M2 PBA Assy
8. Keypad
9. Front Assy
10. Screwcaps
11. Battery
12. Batt Cover Assy

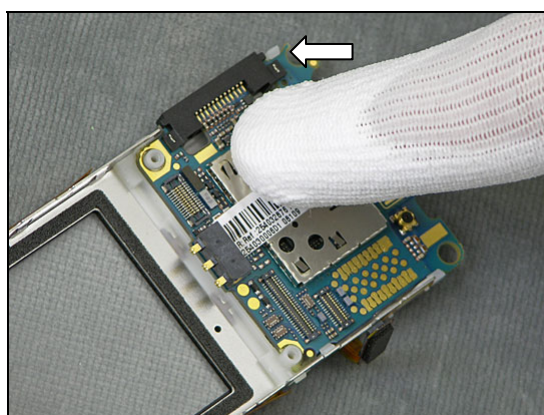


4.1.1 PBA

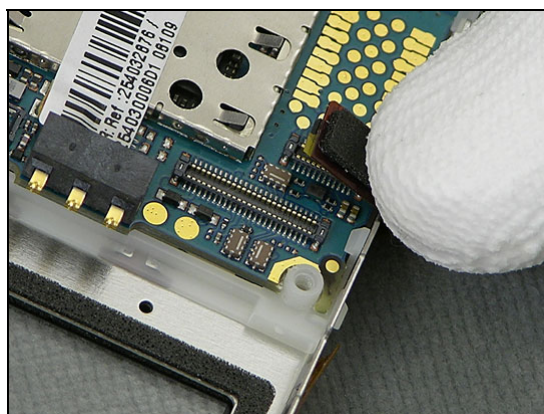
Position the PBA underneath the two hooks at the side of the *Metal Frame Assy*.



Use your finger to press down the *PBA*.



Use your finger to connect the *Metal Frame Assy* Connector.

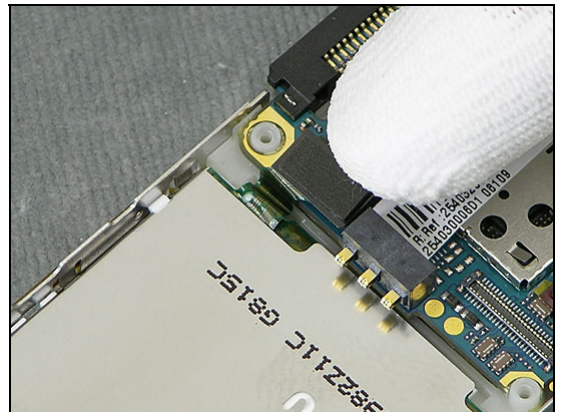


4.1.2 LCD Assy

Use your fingers to position the LCD Assy.



Use your finger to connect the LCD Assy Connector.



4.1.3 Camera Flex Assy/Camera Support Assy

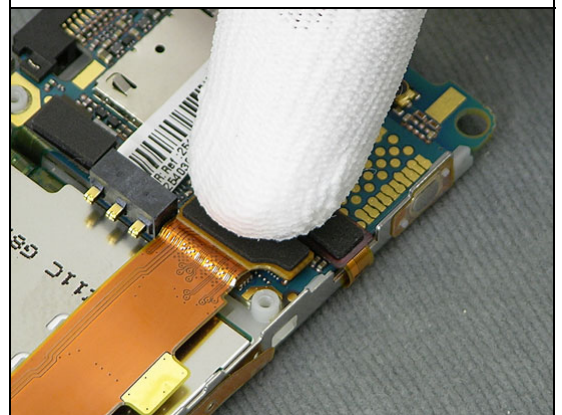
Use your fingers to position the Camera Flex Assy/Camera Support Assy.



Use your finger to press down the Camera Flex Assy/Camera Support Assy.



Use your finger to connect the Camera Flex Assy Connector.



4.1.4 LCD Metal Support

Use your fingers to position the LCD Metal Support.
Start at the top of the phone.

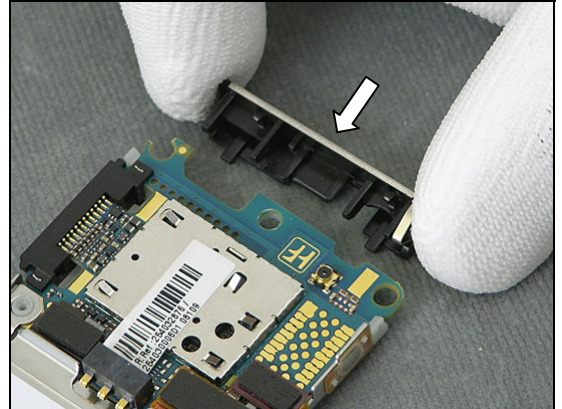


Fix the LCD Metal Support by pressing with your fingers.



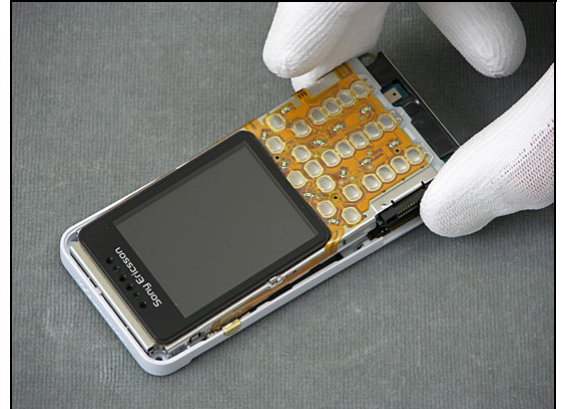
4.1.5 Antenna Assy

Use your fingers to mount the Antenna Assy.



4.1.6 Rear Cover Assy

Position the Core Unit into the Rear Cover Assy.
Top first.



Fix the Core Unit and the Rear Cover Assy together by
pressing with your fingers.



4.1.7 Keypad

Position the Keypad into the Front Assy.



4.1.8 Front Assy

Position the Core Unit into the Front Assy.

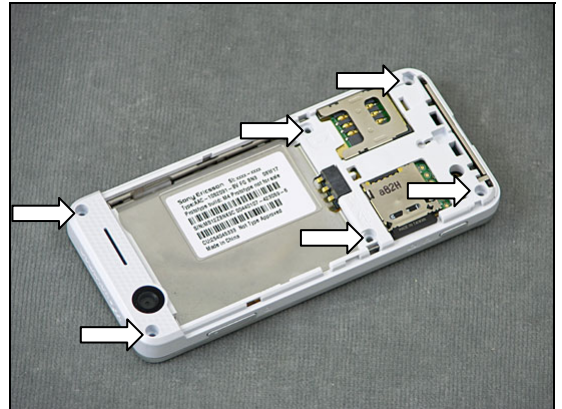


Fix the Front Assy by pressing with your fingers.



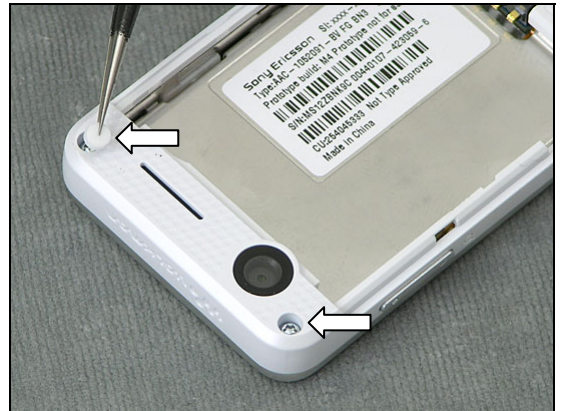
4.1.9 Screws

Use 10 Ncm torque to tighten the six screws with a Torx No. 6 (T6) Bit.



4.1.10 Screwcaps

Mount the two Screwcaps.



4.1.11 Battery & Battery Cover Assy

Mount the Battery with your fingers.



Mount the Battery Cover Assy with your fingers.



5 Country of Origin Barcodes for Brazil/VIVO

Below is a link to a list of countries of origin. If you are printing a Brazil or VIVO label, scan the barcode corresponding to the correct country of origin for the “Fabricado” field.

6 Revision history

Rev.	Date	Changes / Comments
1	2008-09-28	First release
2	2008-11-24	The document has been revised